



S/Y CROSSBOW



Length
31.7m 104 ft.



Guests
12











Cabins
4



Crew
5

S/Y CROSSBOW

-  Air Conditioning
-  Fishing Gear
-  Kayaks x 2
-  Paddle Boards x 2
-  Snorkeling Gear
-  Tender
-  Towable water toys
-  Wakeboard
-  Waterskis
-  Wifi



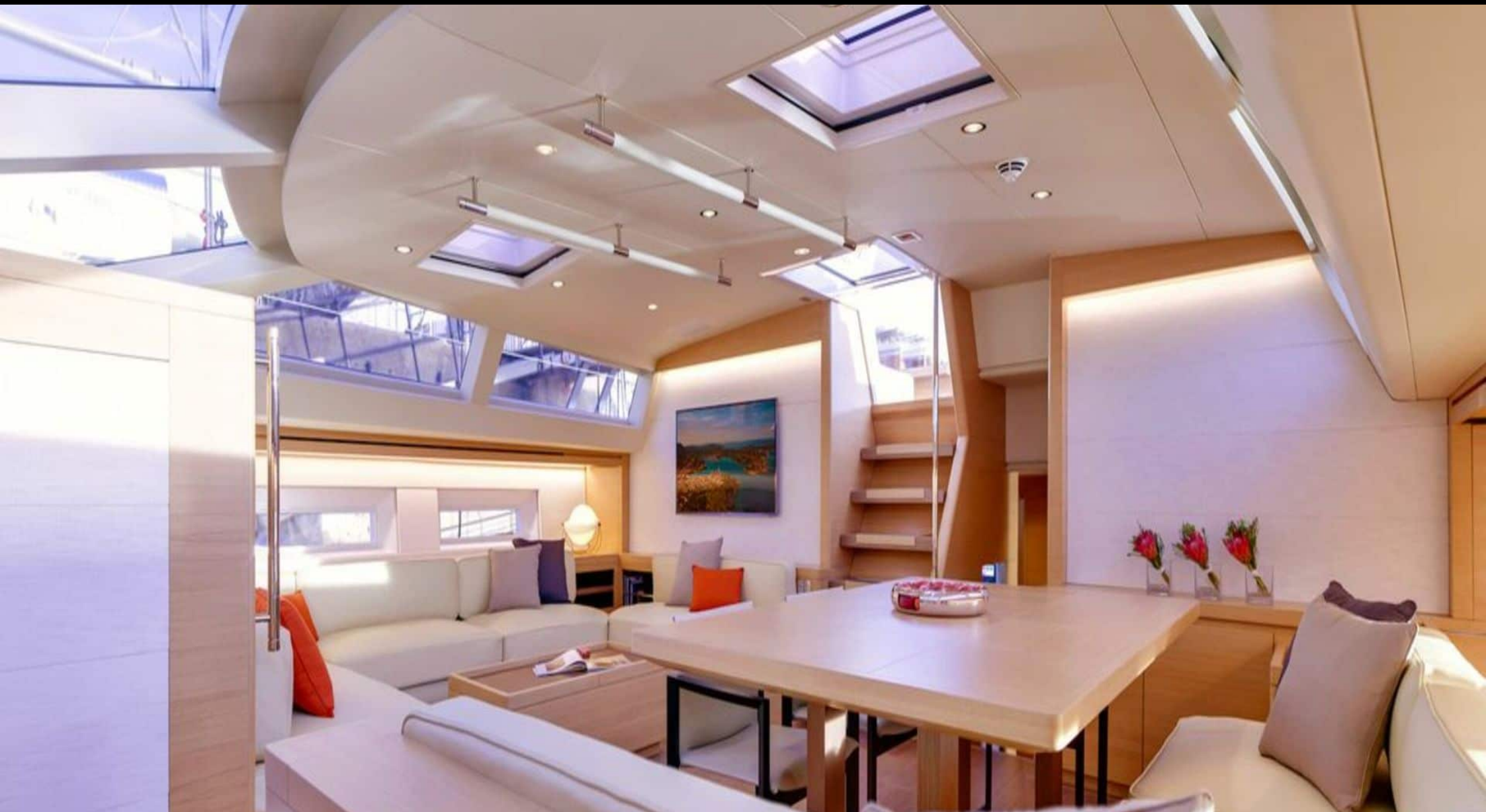
EXTERIOR DESIGN







INTERIOR DESIGN





GALLERY LIFESTYLE





Specifications



Summer low rate per week

72 000 €



Summer high rate per week

77 000 €



Winter low rate per week

72 000 €



Winter high rate per week

77 000 €



Builder

Southern Wind Shipyard



Year built

2016



Year refit

2020



Length

31.7 m



Guests Cruising

12



Cabins

4

Winter Cruising Area(s)

Caribbean & Bahamas

Summer Cruising Area(s)

West Mediterranean

Crew

5

Max speed

11 knots

Cruising speed

10 knots

Fuel consumption

25 Litres/Hr

Type of cabins

4 (2 x Double, 2 x Twin, 1 x Pullman)