



M/Y BUNKER



Length
40m 131.23
ft.



Guests
12



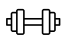


















Cabins
5



Crew
7

M/Y BUNKER

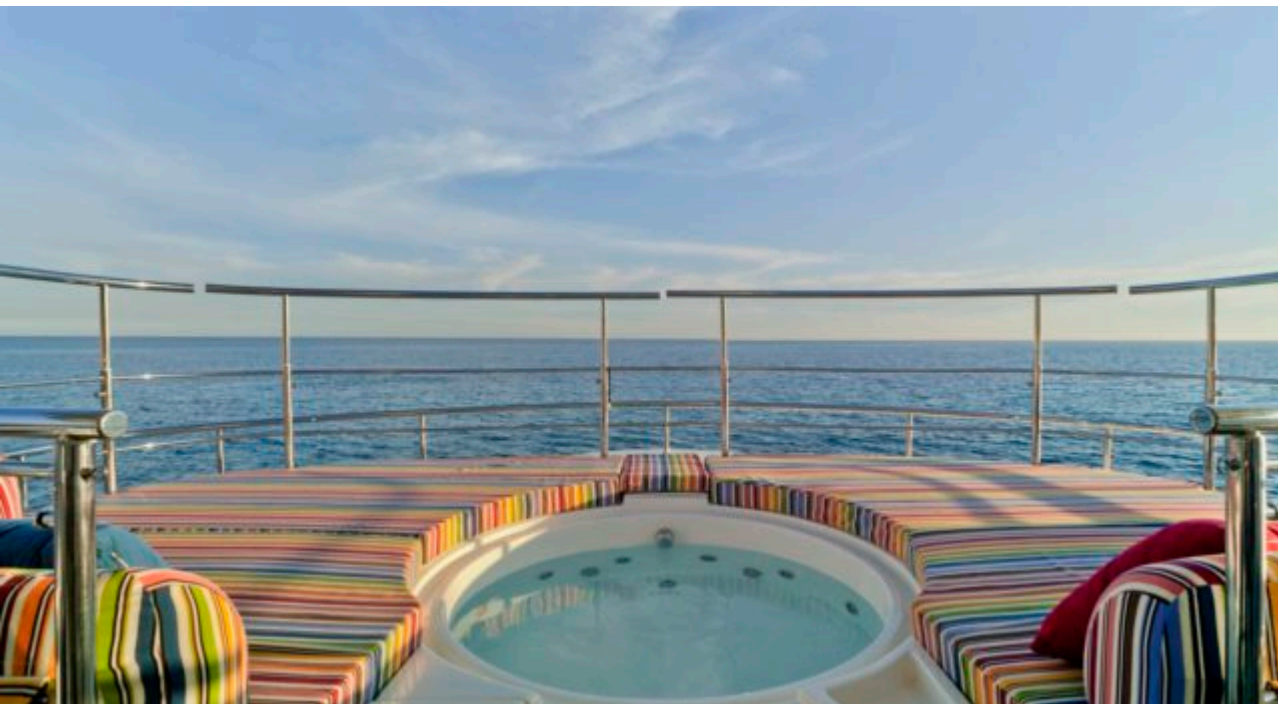
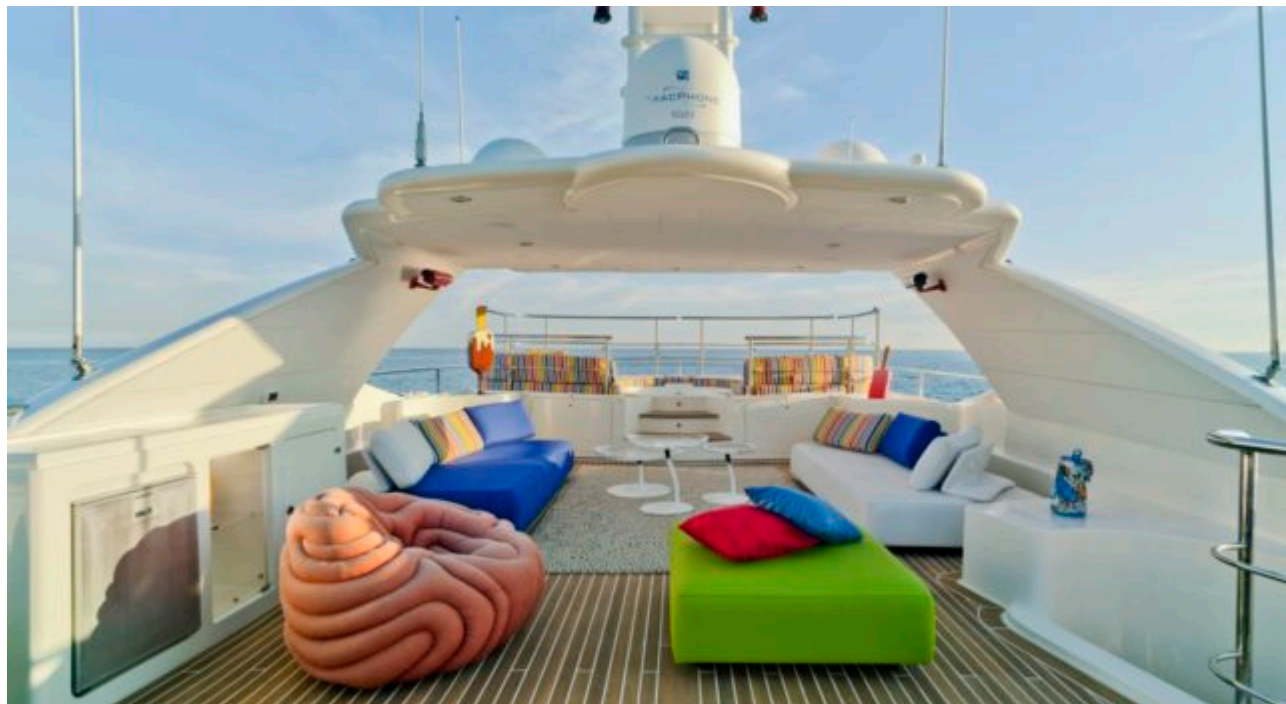
- | | | | | |
|--|---|--|---|--|
| 
Air Conditioning | 
Flyboard | 
Gym Equipment | 
Jacuzzi | 
Jetski |
| 
Paddle Boards x 2 | 
Seabob x 2 | 
Segway x 2 | 
Snorkeling Gear | 
Splash pool |
| 
Stabilisers at anchor | 
Stabilisers underway | 
Tender | 
Towable water toys | 
Wakeboard |
| 
Waterskis | 
Wifi | 
Yoga mats | 
Scubadiving | |

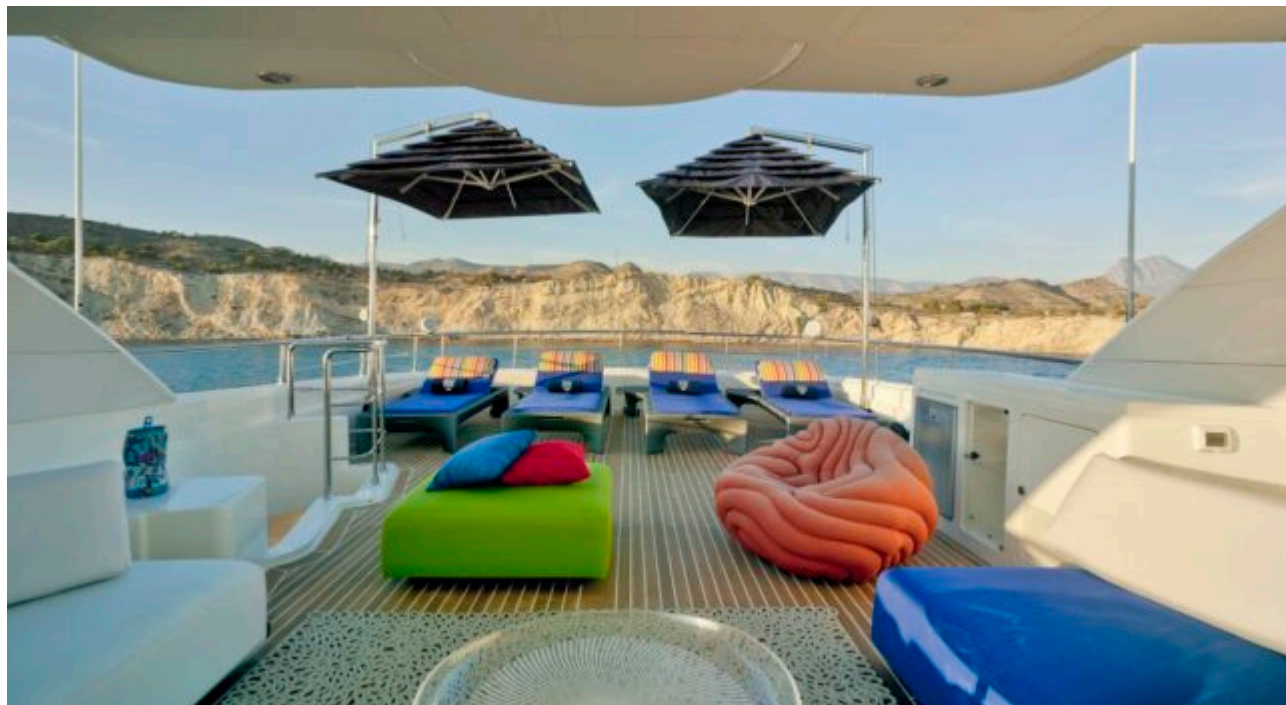


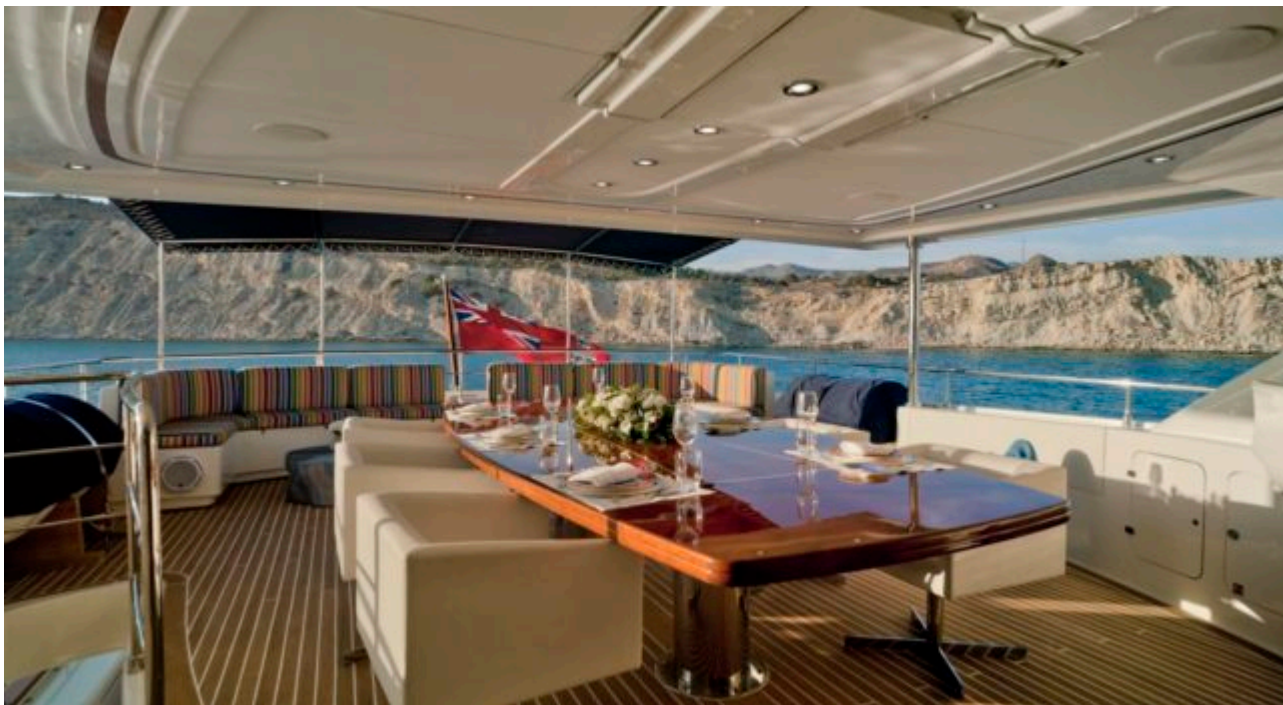
EXTERIOR DESIGN







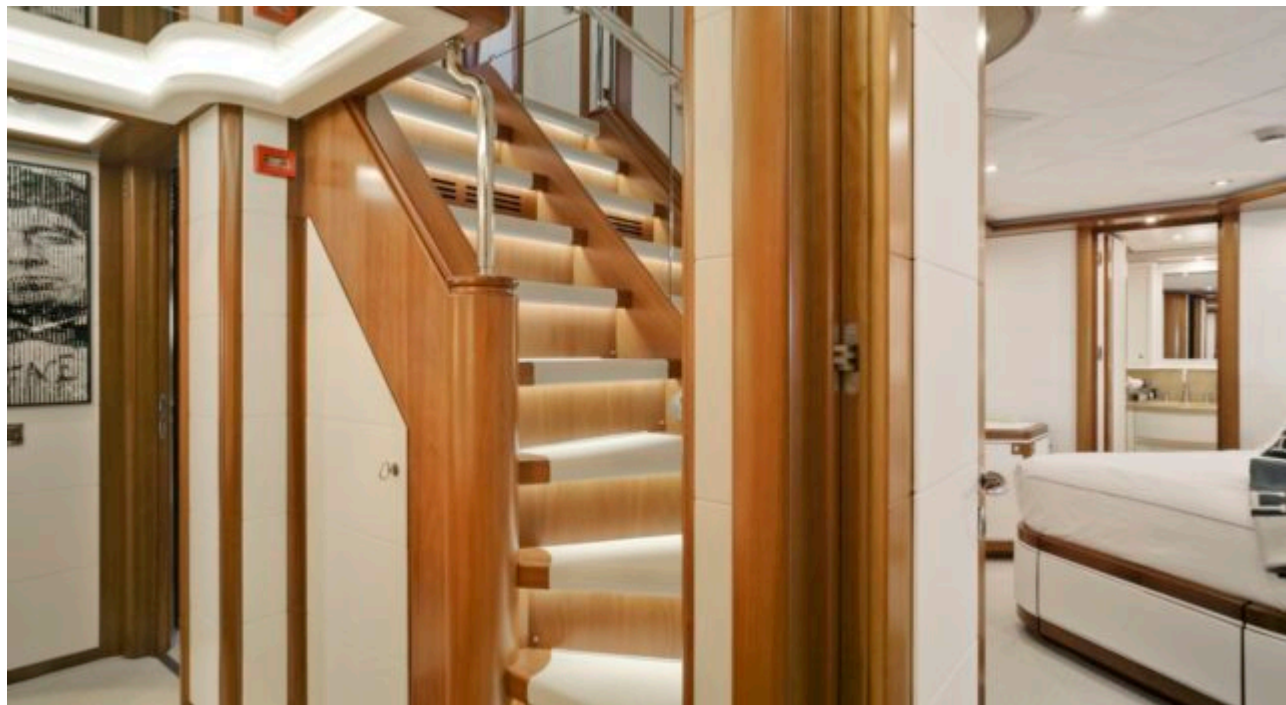


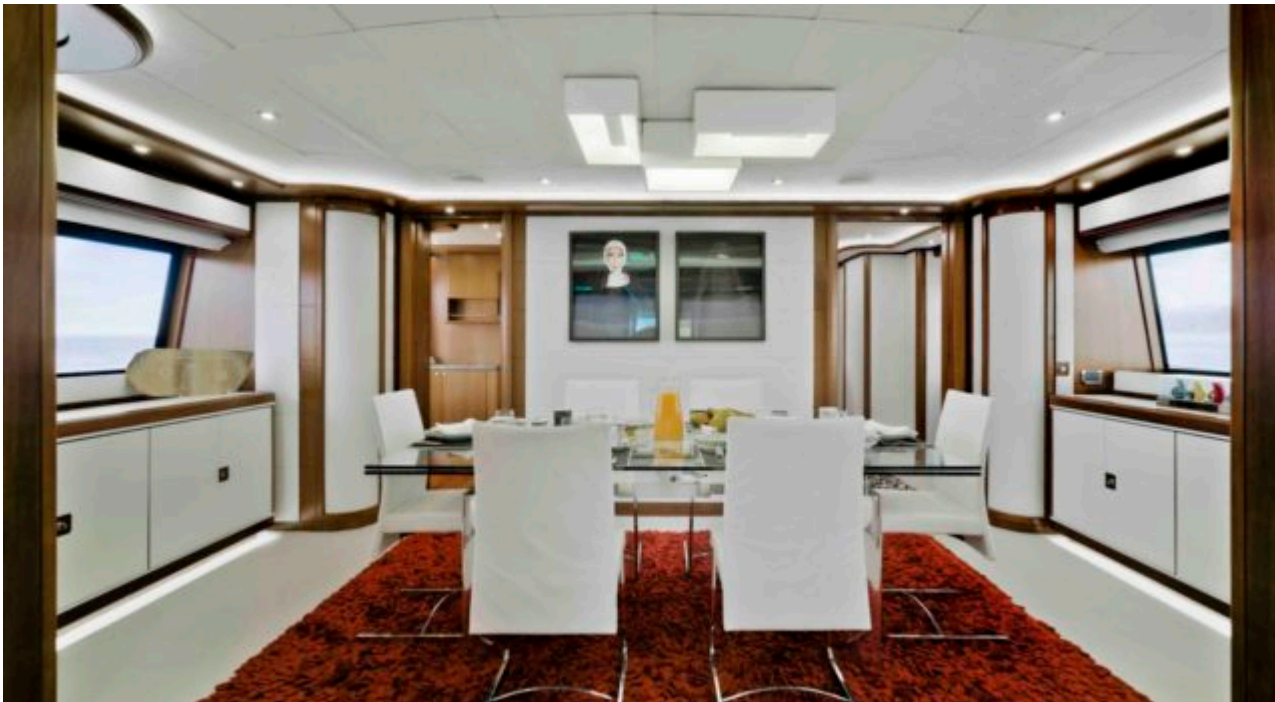


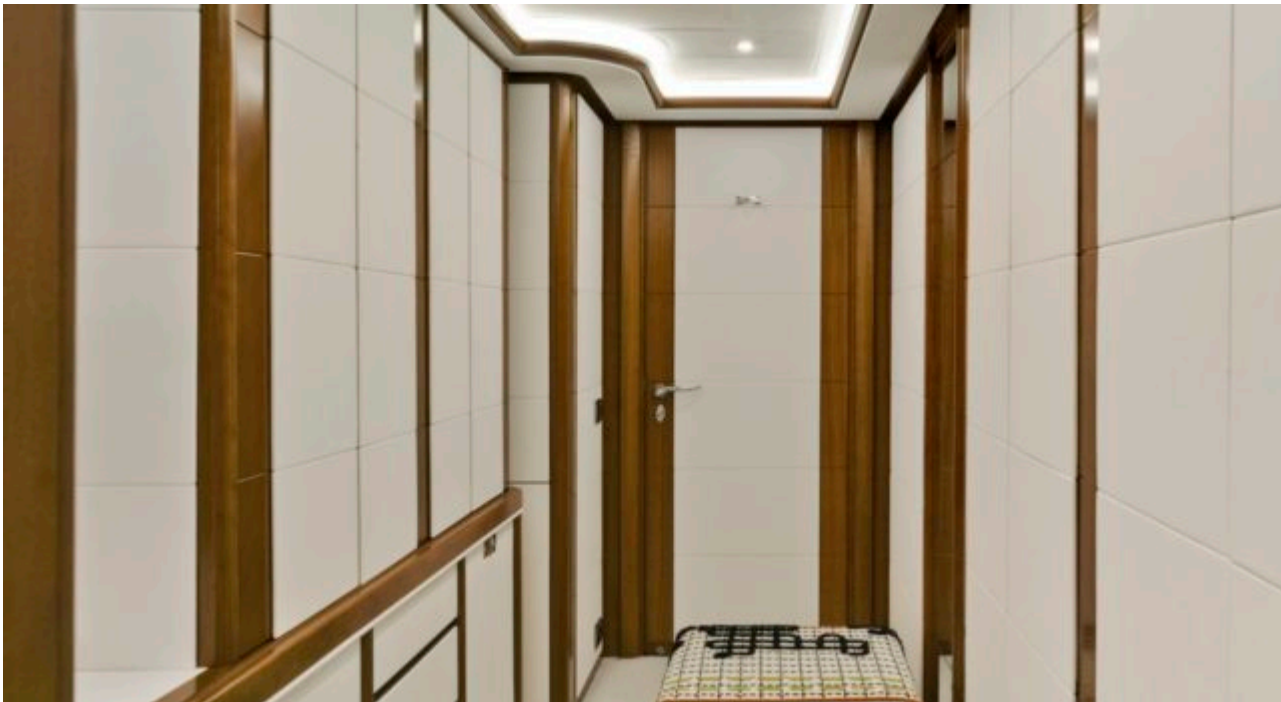
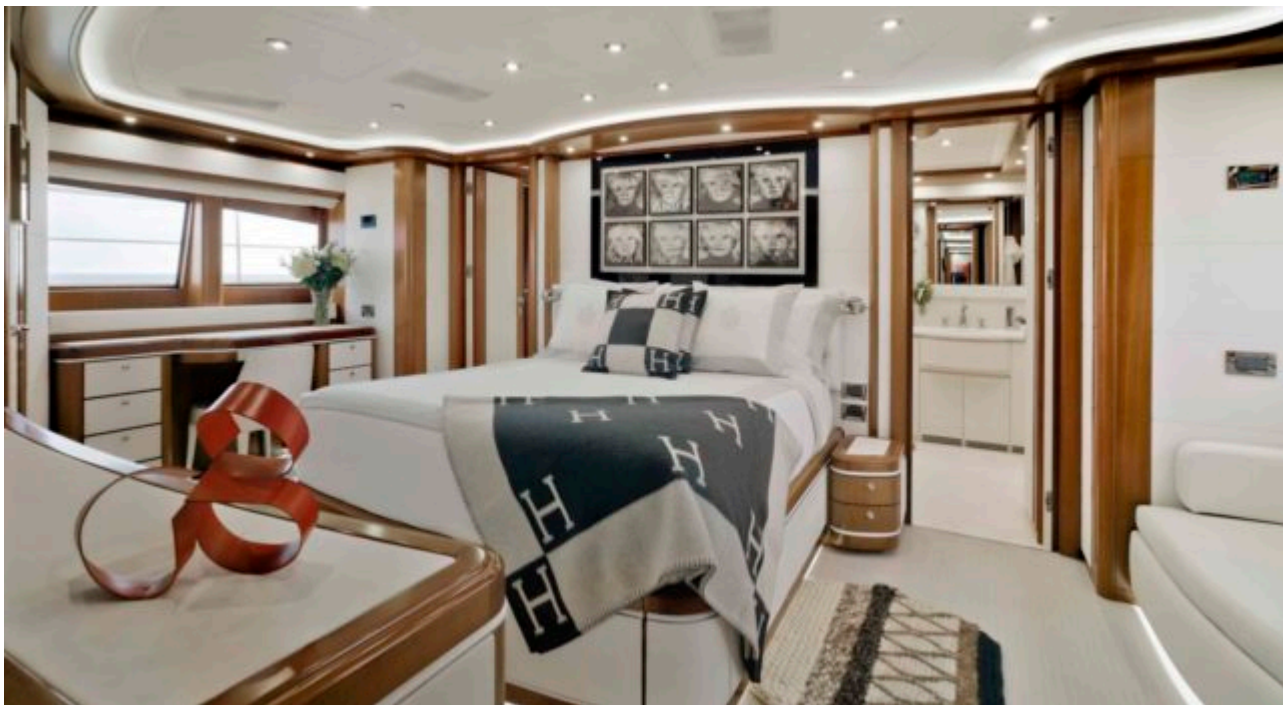


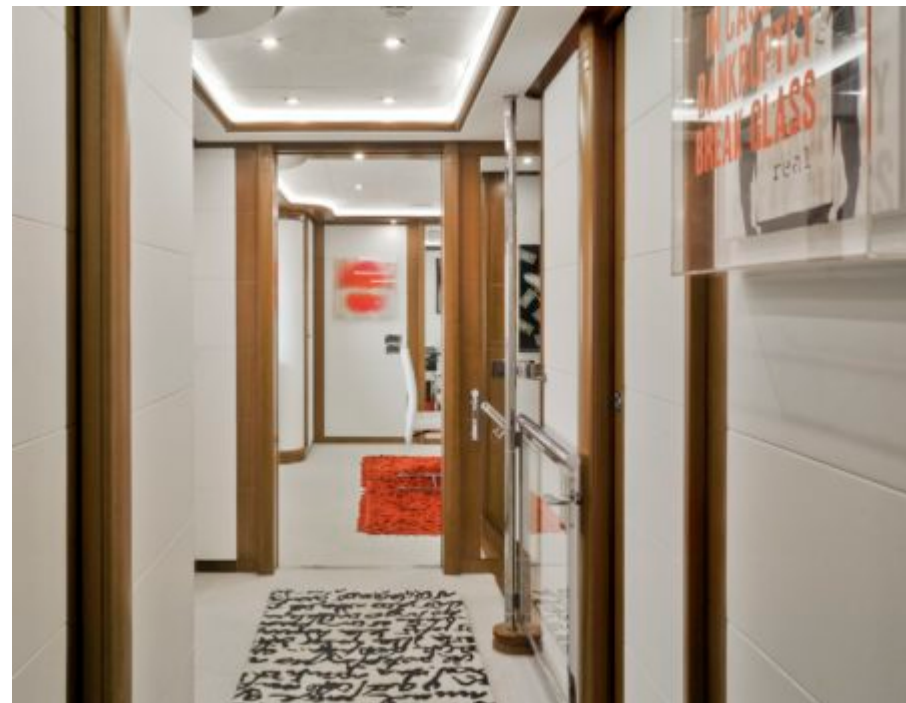
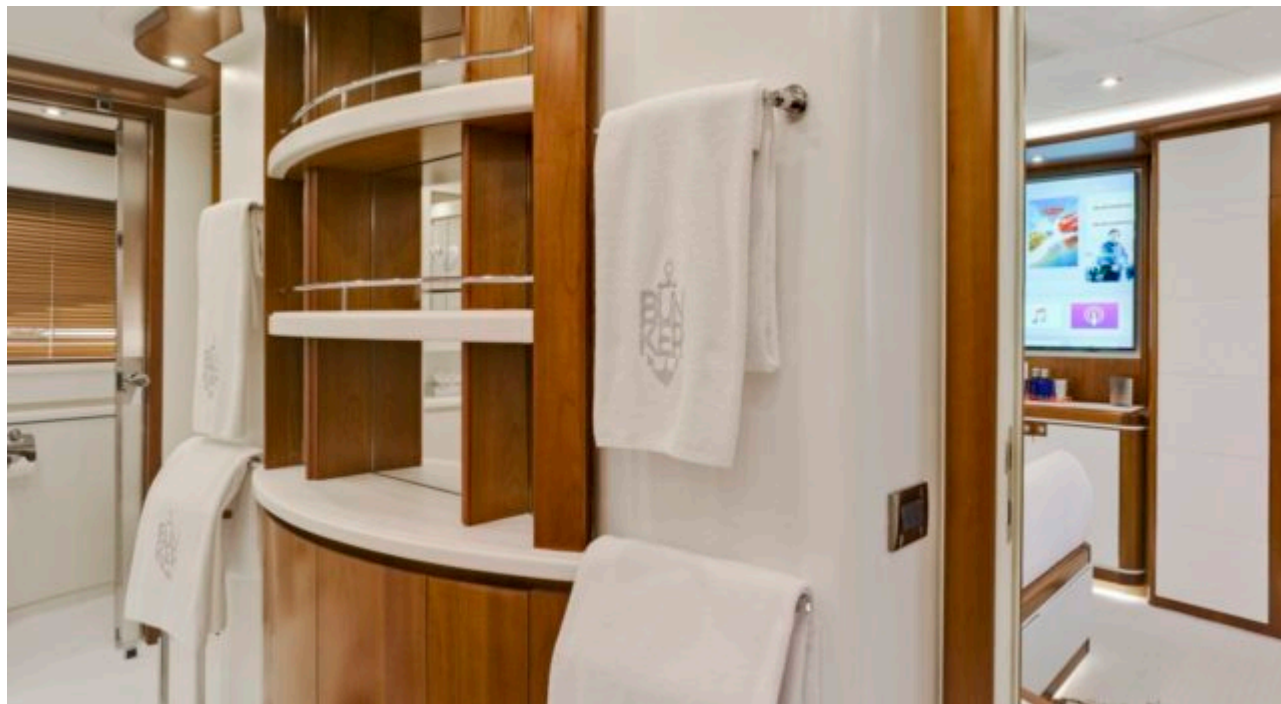
INTERIOR DESIGN



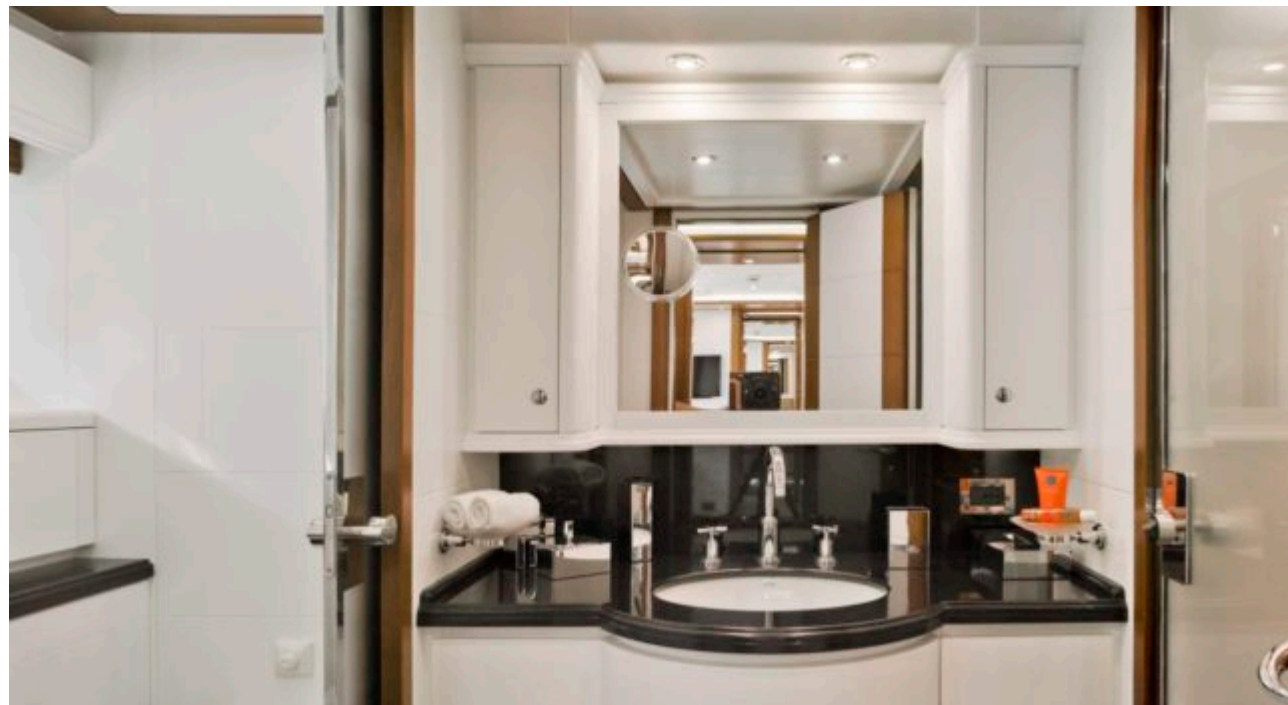












GALLERY LIFESTYLE





Specifications



Summer low rate per week

125 000 €



Summer high rate per week

135 000 €



Winter low rate per week

125 000 €



Winter high rate per week

135 000 €



Builder

CRN ANCONA



Year built

2005



Year refit

2017



Length

40 m



Guests Cruising

12



Cabins

5

Winter Cruising Area(s)

West Mediterranean

Summer Cruising Area(s)

West Mediterranean

Crew

7

Max speed

22 knots

Cruising speed

17 knots

Fuel consumption

650 Litres/Hr

Type of cabins

5 (3 x Double, 2 x Twin, 2 x Pullman)