



M/Y SAMARA

- | | | | | |
|--|---|---|---|---|
| 
Air Conditioning | 
Fishing Gear | 
Jacuzzi | 
Jetski x 2 | 
Kayaks x 2 |
| 
Paddle Boards x 2 | 
Seadoo Seascooter (for diving) | 
Tender | 
Towable water toys | 
Wakeboard |
| 
Waterskis | 
Wifi | 
Scuba diving | | |



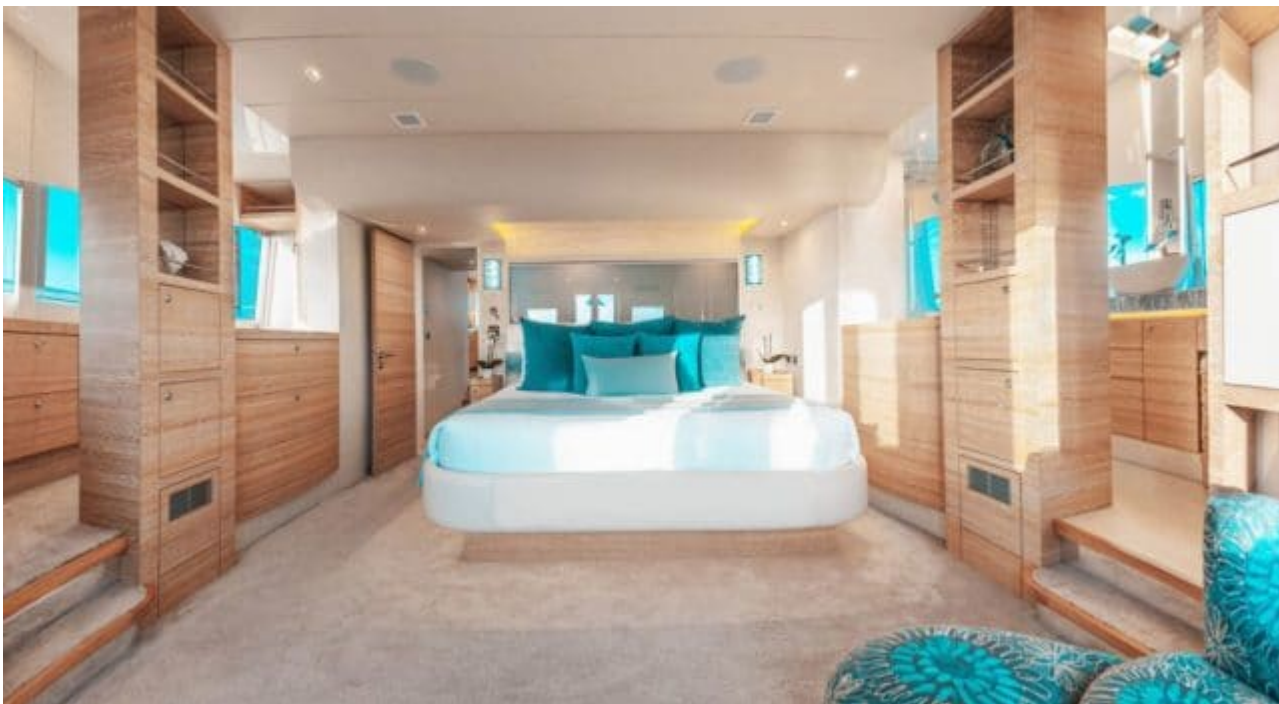
EXTERIOR DESIGN





INTERIOR DESIGN







GALLERY LIFESTYLE





Specifications



Summer low rate per week

\$ 75 500



Summer high rate per week

\$ 77 500



Winter low rate per week

\$ 75 500



Winter high rate per week

\$ 77 500



Builder

Pachoud



Year built

2015



Year refit

2019



Length

24.4 m



Guests Cruising

8



Cabins

4

Winter Cruising Area(s)

Caribbean & Bahamas

Summer Cruising Area(s)

Caribbean & Bahamas

Crew

4

Max speed

22 knots

Cruising speed

12 knots

Fuel consumption

30 US Gall/Hr

Type of cabins

4 (4 x Double, 1 x Pullman)